

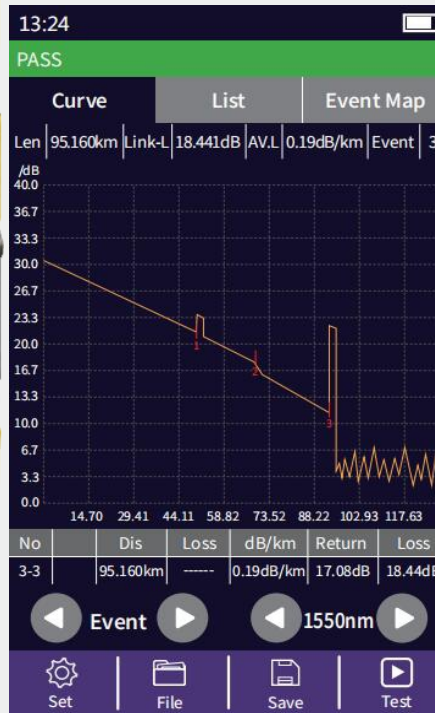
980EXP All-in-One OTDR

High Precision, Android UI, Multi Touch,
and Ultra-short Event Dead Zone for any Cable Testing Situations



Optional Color | Orange | Blue

12-in-1 Device



- Auto OTDR
- Expert OTDR
- Event Map
- Optical Power Meter
- Optical Light Source
- Insertion Loss
- Visual Fault Locator
- RJ45 Cable Tracking
- RJ45 Cable Sequence
- RJ45 Cable Length
- Space Distance
- LED Light

Configuration

Model#	980EXP-D28	980EXP-D30	980EXP-A26	980EXP-B26	980EXP-B32	980EXP-M22
Wavelength	1310/1550nm	1310/1550nm	1625nm	1650nm	1650nm	850/1300nm
Dynamic Range	28/26dB	30/28dB	26dB	26dB	32dB	22dB
Testing Range	1.2m to 90km	1.2m to 100km	1.2 to 90km	1.2 to 90km	1.2 to 128km	1.2m to 60km
Auto OTDR	√	√	√	√	√	√
Expert OTDR	√	√	√	√	√	√
Power Meter	√	√	√	√	√	√
Light Source	√	√	√	√	√	√
Visual Fault Locator	√	√	√	√	√	√
Insertion Loss	√	√	√	√	√	√
LED Light	√	√	√	√	√	√
Event Map	√	√	√	√	√	√
RJ45 Cable Distance	√	√	√	√	√	√
RJ45 Cable Sequence	√	√	√	√	√	√
RJ45 Cable Tracking	√	√	√	√	√	√
Space Distance	√	√	√	√	√	√
1490nm Online	x	x	√	√	√	x
1550nm Online	x	x	√	√	√	x
1577nm Online	x	x	x	√	√	x

-A26(1625nm) can test the fiber with 1310/1490/1550nm signal in(power <0dBm)

-B26/B32(1650nm) can test the fiber with 1310/1490/1550/1577nm signal in(power <5dBm)

* Bluetooth function is optional * GPON/EPON/XGSPON Power Meter 1490nm/1577nm is optional

General	
Size/Weight	174x92x45mm/ 400g (Battery included)
Display	4.3 inch touch-sensitive IPS TFT Screen, 800x480 Resolution
Interface	USB, TF Card Port, Rj45 Port, OTDR port, VFL port, Power Meter Port, Charging Port
Power Supply	Input: 100V(ac) to 240V(ac), 50~60Hz, 0.6A; Output: 5V(DC), 2A 4000mAh/5V Lithium battery (with air traffic certification)
Working Time	>8 hours
Power Saving	Intelligent power management Auto power off: Never/1min/5min/10min/30min/60min
Data Storage	4GB (about 200,000 curves)
Language	English, French, Korean
Environmental Conditions	Operating temperature and humidity: -10°C~+55°C, ≤95% (non-condensation) Storage temperature and humidity: -20°C~+80°C, ≤95% (non-condensation)

OTDR Module	
Pulse Width	3ns,5ns,10ns,20ns,30ns,50ns,80ns,160ns,320ns,500ns,800ns,1μs,2μs,5μs,10μs,20μs
Distance Range	500m,1km, 2km, 4km, 8km, 16km, 32km, 64km, 100km
Sampling Resolution	Minimum 0.2m
Sampling Point	Maximum 256,000 points
Linearity	≤0.05dB/dB
Averaging Time	Setting by user
Scale Indication	X axis: 4~70m/div, Y axis: 0.09~5dB/div
Distance Accuracy	±(1m+measuring distance×3×10 ⁻⁵ +sampling resolution) (excluding IOR uncertainty)
Loss Threshold	0.01dB
Loss Resolution	0.001dB
Distance Resolution	0.001m
IOR Setting	1.0~2.0, 0.0001 step
Units	km, mi, kft
OTDR Trace Format	Telcordia universal, SOR, issue 2(SR-4731)

VFL Module	
Wavelength	650nm
Output Power	10mw, CLASSIII B
Range	12km
Launching Mode	CW/1Hz/2Hz

OPM Module	
Wavelength	850 to 1650nm (Optional 1490nm for GPON, 1577nm for XGSPON)
Test Range	-70~+ 10dBm or -50~+ 26dBm (in default)
Resolution	0.01
Accuracy	±0.35dB±1nW
Modulation	270/330/1k/2k Hz, Pi≥-40dBm

OLS Module	
Wavelength	Same as OTDR Wavelengths
Output Power	>-5dBm
Output mode	CW/270/330/1k/2k Hz

RJ45 Cable Tracker

Testing Range	300 meters
Signal Type	Analog signal/Digital Signal
Active Cable Track	Support
Signal Receiver	Sent as a default Accessories
Warning Sound	Yes
RJ45 Cable Type	Support both 568A and 568B

RJ45 Cable Sequence

Testing Range	300 meters
Signal Type	Analog signal/Digital Signal
Active Cable Test	Not Support
Remote Unit	Can be took out from bottom of the device
RJ45 Cable Type	Support both 568A and 568B
Testing Time	Less than 15s

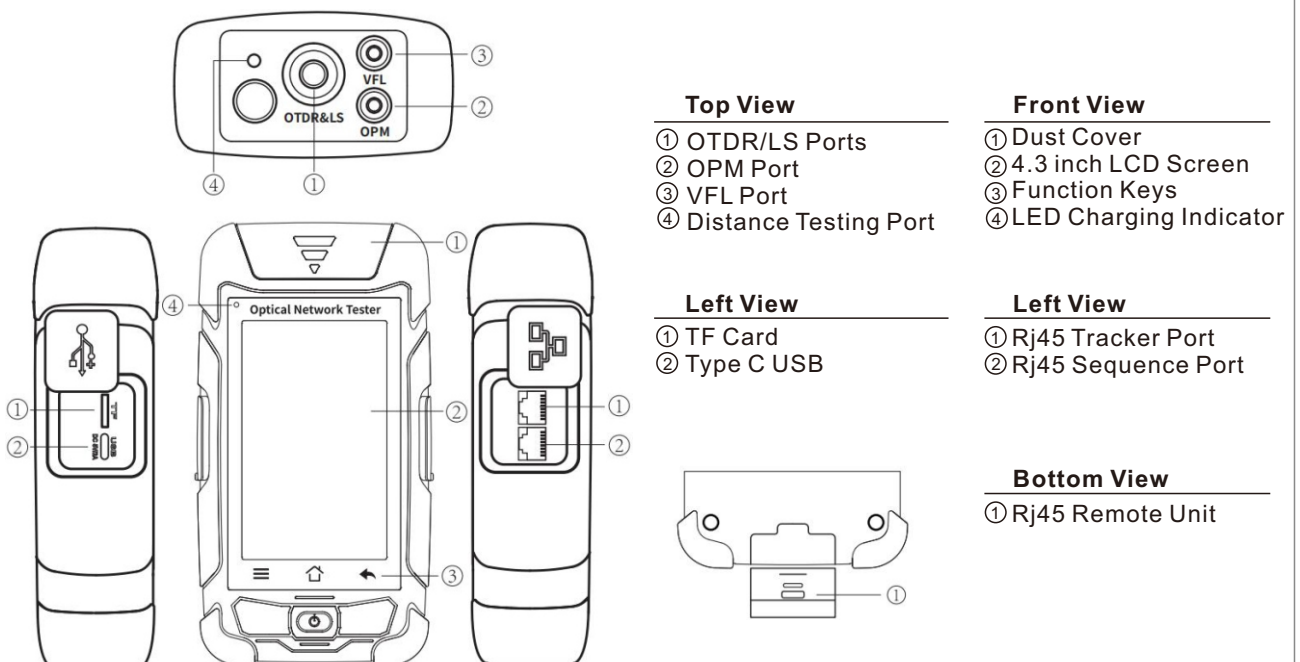
RJ45 Cable Length

Testing Range	300 meters
Signal Type	Analog signal/Digital Signal
Active Cable Test	Not Support
Testing Time	Less than 15s

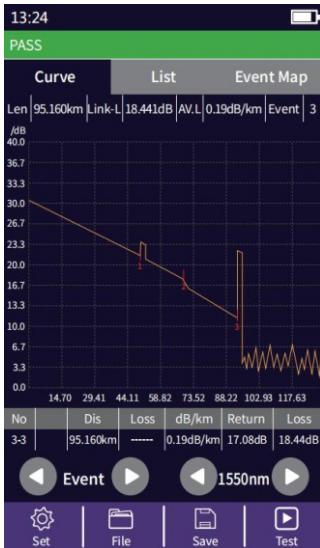
Space Distance Testing

Testing Range	0.05 to 40 meters
Resolution	2mm
Laser Wavelength	620nm to 690nm
Security Level	Class II, <1mW

Structure Drawings



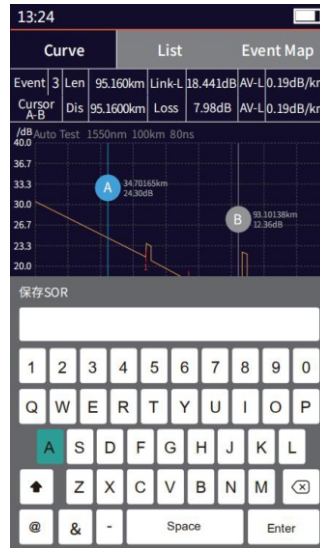
Functions & Settings



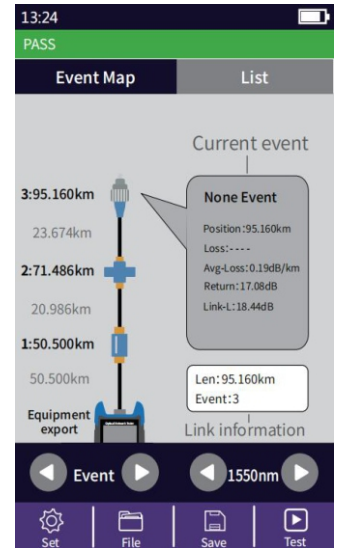
Auto OTDR



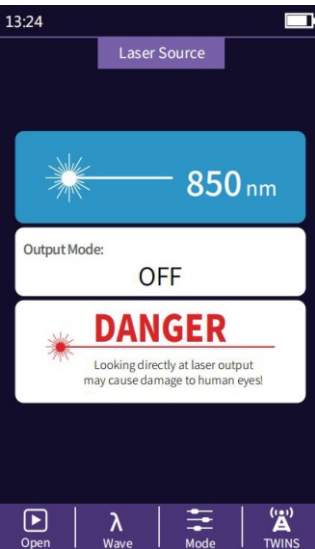
Pass/fail Setting



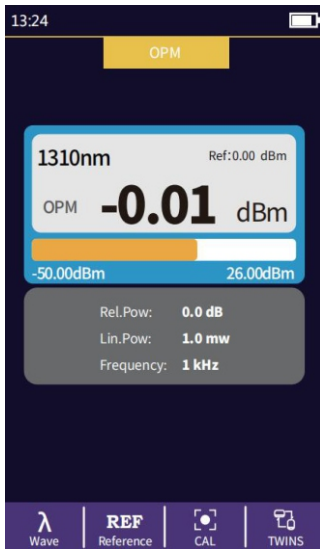
Sor Files Saving



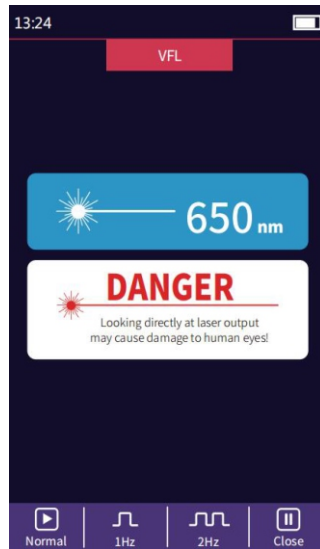
Event Map



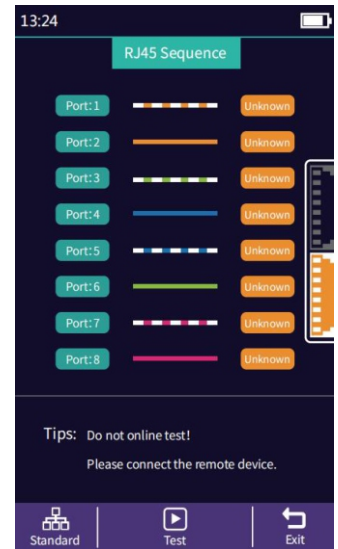
Light Source



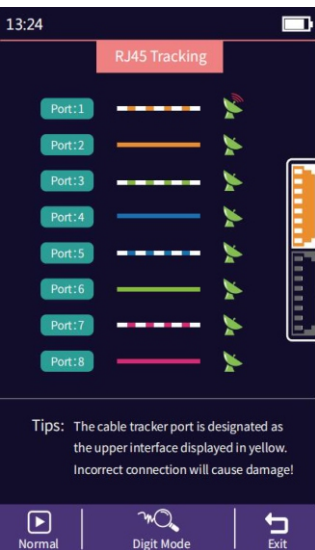
Power Meter



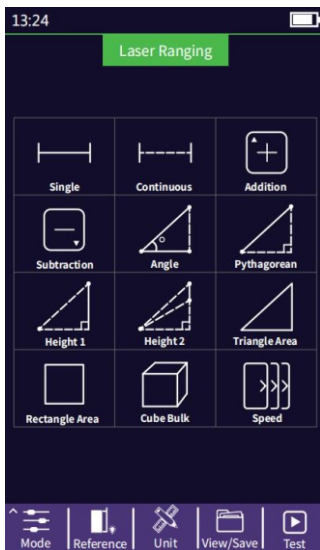
Visual Fault Locator



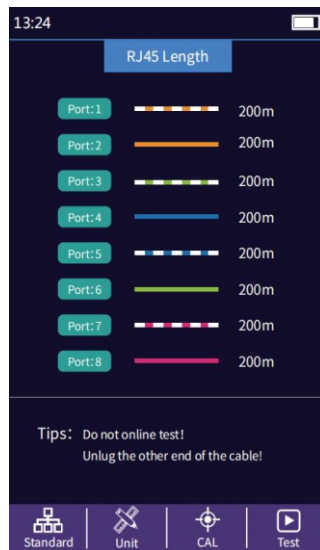
RJ45 Sequence



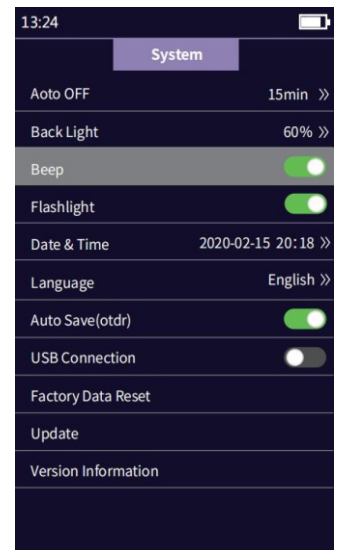
RJ45 Tracking



Space Distance



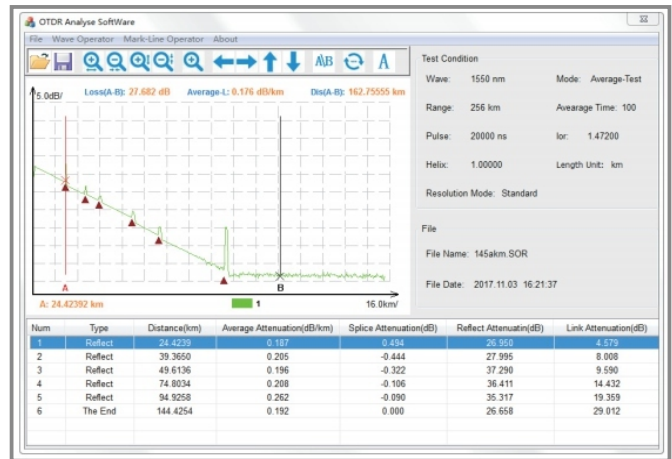
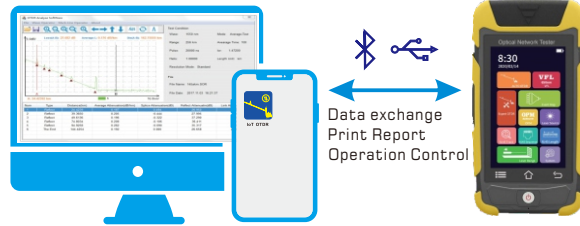
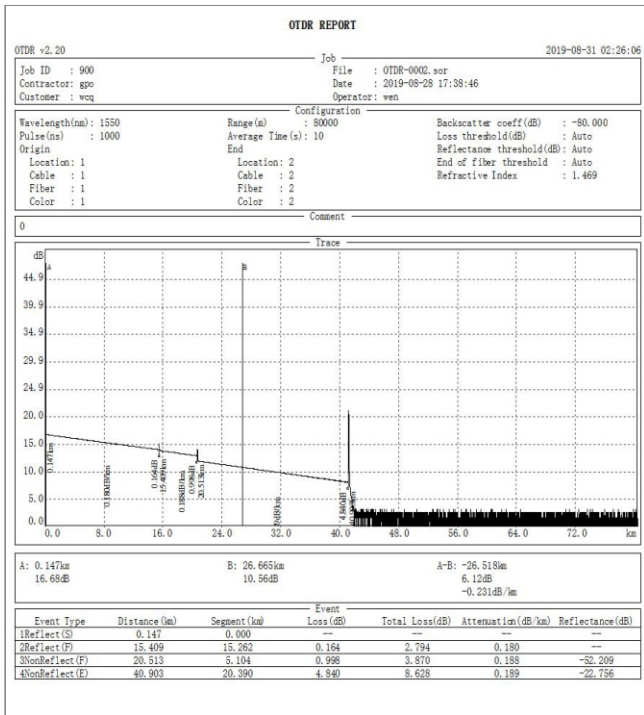
RJ45 Length



System Setting

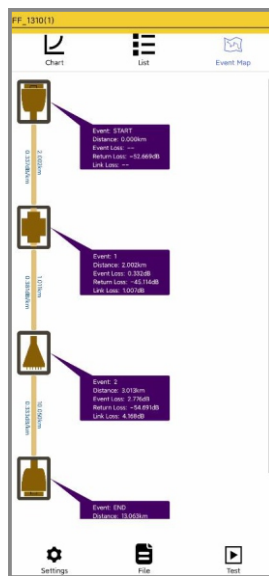
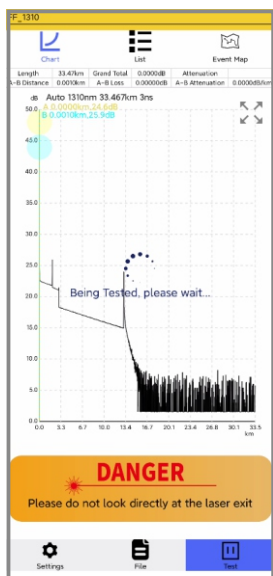
Please visit the link for more pictures and video demo
www.firstfiber.cn/otdr-980exp.html

OTDR Report Printing



PC Software

IoT OTDR (Bluetooth & GPS)



Mobile Phone App



Operation Video