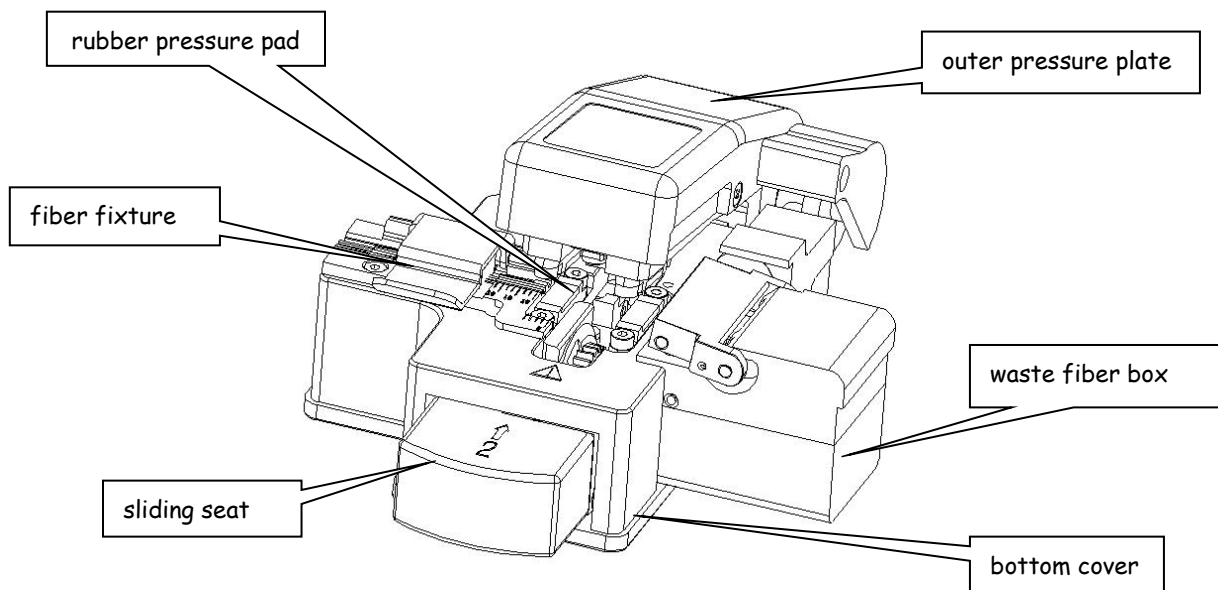


# FF-80T Fiber Cleaver Instruction

- Please read this instruction carefully before using
- Fiber and fiber debris are very thin which has sharp tips, so prevent fiber debris into the skin, eyes in use. fiber broken chips should be collected in a special container
- Do not split the cutter, please contact the factory after-sales service department if you need repair.

## Basic Specifications

Adapt to optical fiber	Single-core silica optical fiber
To adapt optical fiber coating diameter	$\varphi 0.25$ & $\varphi 0.9$
Adapt to the bare fiber diameter	125 $\mu\text{m}$
Cutting the fiber length	5~16mm ( $\varphi 0.25$ ) 10~ 16 mm( $\varphi 0.9$ )
Dimensions	107mm (W) ×94mm (D) ×50mm (H)
Weight	About 340g
Cutting angle adaptation value	$\leq 0.7^\circ$
Edge life	60000 times



## Method of use

1. Press and hold the outer pressure plate and press down on the rear indication to unlock the outer pressure plate. Open the outer pressure plate, then push the sliding seat inward and push it to the locked position;
2. Stripping fiber coating with peeling pliers, reserved bare fiber length of 30-40mm, with alcohol-based skimmed cotton or cotton paper Cover the fiber and wipe it clean.
3. After the eye-catching fiber coated edge is aligned to the appropriate scale on the cutter ruler, the left hand releases the fiber into the fiber fixture guide slot, the bare fiber is required to be placed straight on the rubber press to make sure that one end of the fiber can reach the Rollers in the fiber collector;
4. Close the fiber clamp cover, press the outer pressure plate to the sliding seat to eject, and then open the outer pressure plate to complete the cutting, the waste fiber will be Put in the waste fiber box.
5. Pinch the fiber with your left hand while opening the fiber clamp cover with your right hand and carefully move the cut-out fiber away

6. Troubleshooting, the cause of poor cutting may be: the fiber is not placed straight on the fiber pad; cushion is Too high; foreign objects such as dust on the blade and cushion.

## Maintenance

1. Daily cleaning, please often use alcohol-stained cotton swabs to clean the rubber surface of the rubber pressure pad and the blade edge, especially when the cut-off effect is not good, they must be cleaned in a timely manner, and fiber guide groove also needs to be cleaned; The position of the blade is auto cycle which don't need adjust.

2. Adjustment of the height of the blade.

A. Push the sliding seat inward to the locked position and loosen the highly locking screw.

B. Screw the height adjustment screw a little in the direction you want and lock the height locking screw, clockwise to turn it high and counterclockwise.

3. problems and adjustment methods

A. Fiber can't be cut through, and has bevels and bump phenomenon etc. When this problem occurs with a cutter fully adjusted by the above methods, it may be caused by low blade, please adjust the height of the blade as described above method.

B. Crack fiber, fiber end surface has a shadow appears, the fiber angle may be caused by the blade which is too high, please lower the height of the blade according to the above method.

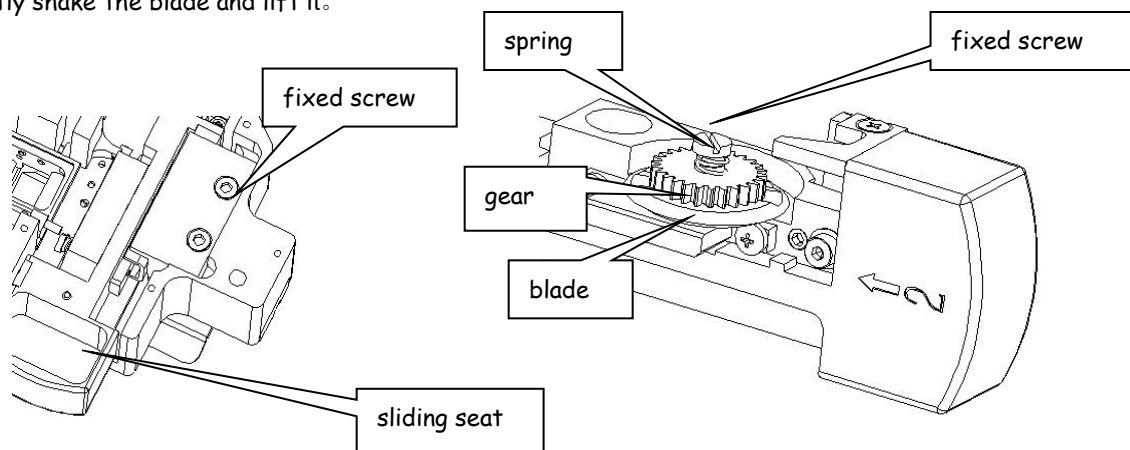
C. If the fiber end surface continues to deteriorate, and the adjustment height can no longer be improved, it may be the blade has been worn to the life time. At that time, the original blade needs to be replaced in time.

D. If the cutter is adjusted according to the above method, the cutting condition still has not been improved, it may be some parts except blade have failed and need to be repaired

4. Replacement of blades

A. Remove the waste fiber box manually down, turn the bottom of the cutter up, unscrew the bottom 5 M2 screws, remove the bottom cover.

B. Unscrew fixed screw (see left hand chart) and remove the sliding seat components a whole for easy replacement of the blade, as follows: Unscrew the fixed pin in a clockwise direction, use tweezers to remove the fixed pins, springs, gears, blades in turn, and clamp the sides of blades with tweezers, gently shake the blade and lift it.



C. Clamp the new blade with a tweezer, level the blade and place it from a position just above the blade shaft, so that the blade hole falls into the shaft, the blade must not touch any component, and when placing the gear, the gear hole falls into the shaft firstly, and then slightly turns the gear so that long boss on the side with gears snaps into the groove of the blade, places the spring on the gear shaft, passes the fixed pin through the spring, and locks the fixed pin

D. Install the sliding seat component as it was

E. Install the bottom cover and the waste fiber box.

