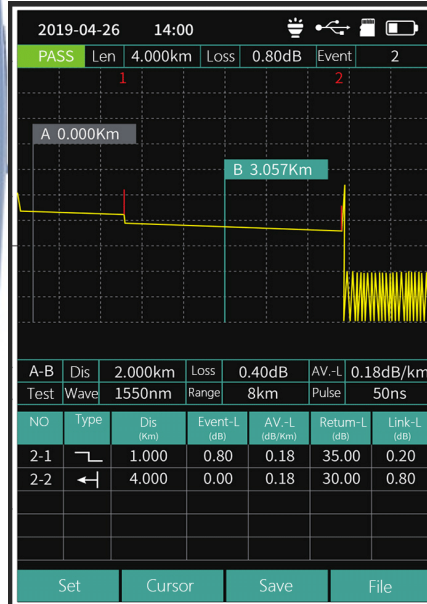


# FF-980REV Mini Pro OTDR

High Precision, Portable for Easy Carrying,  
and Ultra-short Event Dead Zone for any Cable Testing Situations

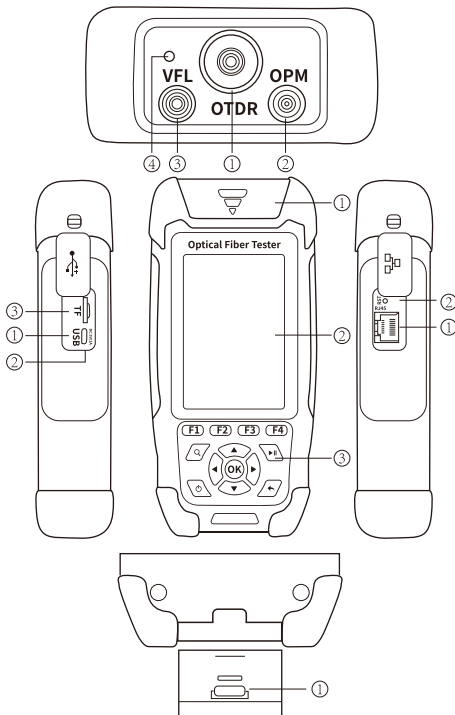


## 9-in-1



- OTDR (Auto Test)
- OTDR (Average Test)
- OTDR (Real Time Test)
- Event Map
- Optical Power Meter
- Optical Light Source
- Visual Fault Locator
- RJ45 Cable Tracking
- RJ45 Cable Sequence
- RJ45 Cable Length
- LED Light

## Configuration



### Top View

- ① OTDR/LS Port
- ② OPM Port
- ③ VFL Port
- ④ Flashlight

### Front View

- ① Dust Cover
- ② 3.5 inch Screen
- ③ Function Keys

### Left Side

- ① Micro USB Port
- ② Charging Indicator
- ③ TF Card Port

### Right Side

- ① RJ45 Connector
- ② Reset Button

### Bottom View

- ① RJ45 Remote Unit

**Request a Remote Demo**  
[sales@FirstFiber.cn](mailto:sales@FirstFiber.cn)

The Kit Includes: OTDR, FC/SC Connector, User Manual, USB Cable, OTDRviewer Software, Power Charging Adapter, Warranty Card, User Manual, Rj45 Signal Receiver, Carrying Case, Certificate of Calibrate

General	
<b>Size/Weight</b>	173x82x37mm/ 350g (Battery included)
<b>Display</b>	3.5 Inch Colorful Screen
<b>Interface</b>	USB, TF Card Port, Rj45 Port, OTDR port, VFL port, Power Meter Port, Charging Port
<b>Power Supply</b>	Input: 100V(ac) to 240V(ac), 50~60Hz, 0.6A; Output: 5V(DC), 2A 4000mAh/3.7V Lithium battery (with air traffic certification)
<b>Working Time</b>	>12 hours (Continuous measurement); Standby>20 hours; Booting Time <6.5s
<b>Power Saving</b>	Intelligent power management Auto power off: Never/1min/5min/10min/30min/60min
<b>Data Storage</b>	Internal Flash Memory: >600 curves; TF Card: >230,000 curves (8G/32G/64G)
<b>Language</b>	Chinese/English/Russian/Portugal/Vietnamese/French/Spanish (Optional)
<b>Protection</b>	Rubber for Shockproof
<b>Environmental Conditions</b>	Operating temperature and humidity: -10°C~+50°C, ≤95% (non-condensation) Storage temperature and humidity: -40°C~+70°C, ≤95% (non-condensation) Altitude: 0~5000m above sea level Compatible and stable operation: in all climate conditions in Asia, Europe, America, Africa and Australia

OTDR Module	
<b>Wavelength</b>	1310/1550nm (±20nm)
<b>Dynamic Range</b>	24/22dB (Display Range 0 to 40dB)
<b>Pulse Width</b>	3ns,5ns,10ns,20ns,30ns,50ns,80ns,160ns,320ns,500ns,800ns,1μs,2μs,5μs,10μs
<b>Distance Range</b>	500m,1km, 2km, 4km, 8km, 16km, 32km, 64km
<b>Dead Zone</b>	Event dead zone: 3 meters, Attenuation dead zone: 8 meters
<b>Sampling Resolution</b>	Min 0.05m, Max 8m
<b>Sampling Point</b>	Min 16,000 Max 128,000 points
<b>Laser Safety</b>	Class II
<b>Averaging Time</b>	Setting by user
<b>Reflectance Accuracy</b>	≤±3dB
<b>Distance Accuracy</b>	±(1m+measuring distance×3×10 <sup>-5</sup> +sampling resolution) (excluding IOR uncertainty)
<b>Loss Threshold</b>	0.01dB
<b>Loss Resolution</b>	0.001dB
<b>Attenuation Accuracy</b>	≤±0.05dB/dB
<b>Distance Resolution</b>	0.01m
<b>IOR Setting</b>	1.0~2.0, 0.0001 step
<b>Units</b>	km, kft, mi
<b>OTDR Trace Format</b>	Telcordia GR-196-CORE Issue2 2010
<b>Live Signal Warning</b>	Support

OPM Module	
<b>Wavelength</b>	850/980/1300/1310/1490/1550/162/1650nm
<b>Test Range</b>	-70~+ 10dBm or -50~+ 26dBm
<b>Accuracy</b>	±0.35dB±1nW (Uncertainty ±5%)
<b>User Calibrate</b>	Support
<b>Modulation</b>	CW/270/330/1k/2k Hz
<b>Reference</b>	Support
<b>Adapter</b>	2.5mm Universal (support SC FC ST)

### OLS Module

<b>Laser Type</b>	FP-LD
<b>Wavelength</b>	1310/1550nm ( $\pm 20$ nm)
<b>Output Power</b>	> -5dBm
<b>Output Mode</b>	CW/270/330/1k/2k Hz
<b>Stable</b>	$\pm 0.5$ dB/15min (CW mode)

### VFL Module

<b>Wavelength</b>	650nm ( $\pm 20$ nm)
<b>Output Power</b>	10mw, CLASSIII B
<b>Range</b>	12km
<b>Launching Mode</b>	CW/1Hz/2Hz
<b>Adapter Type</b>	2.5mm Universal Adapter for FC SC ST Connectors

### RJ45 Cable Tracker

<b>Testing Range</b>	300 meters
<b>Signal Type</b>	Analog signal/Digital Signal
<b>Active Cable Track</b>	Support
<b>Signal Receiver</b>	Sent as a default Accessories
<b>Warning Sound</b>	Yes
<b>Rj45 Cable Type</b>	Support both 568A and 568B

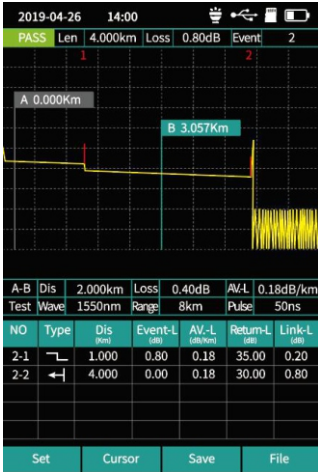
### RJ45 Cable Sequence

<b>Testing Range</b>	300 meters
<b>Signal Type</b>	Analog signal/Digital Signal
<b>Active Cable Test</b>	Not Support
<b>Remote Unit</b>	Can be took out from bottom of the device
<b>RJ45 Cable Type</b>	Support both 568A and 568B
<b>Testing Time</b>	Less than 15s

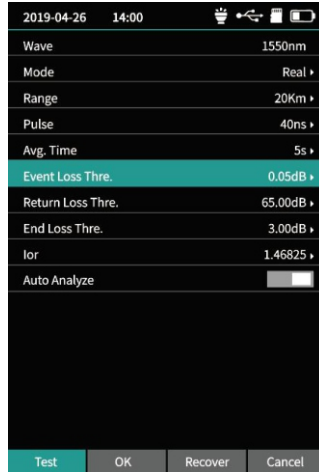
### RJ45 Cable Length

<b>Testing Range</b>	300 meters
<b>Signal Type</b>	Analog signal/Digital Signal
<b>Active Cable Test</b>	Not Support
<b>Testing Time</b>	Less than 15s
<b>Unit</b>	m/km/ft

Functions & Settings



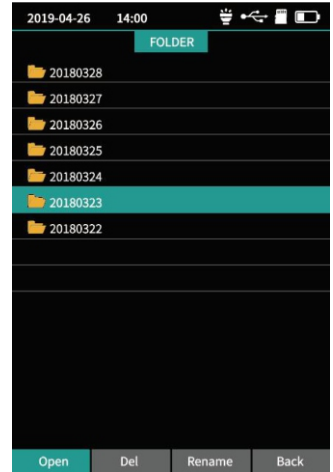
OTDR Curves



Testing Parameters



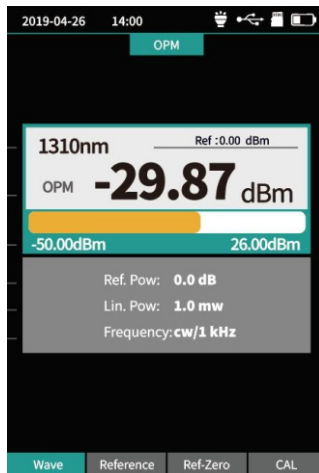
Sor Files Saving



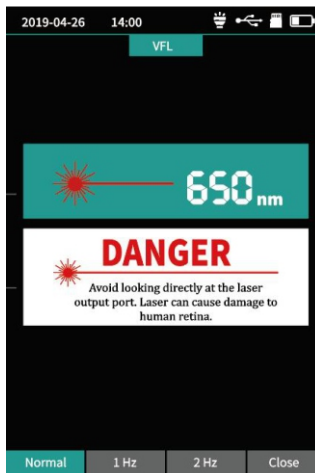
Testing Results



Event Map



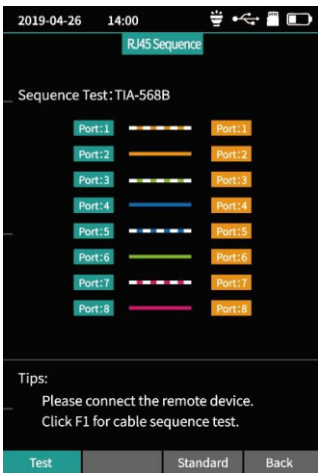
Power Meter



Visual Fault Locator



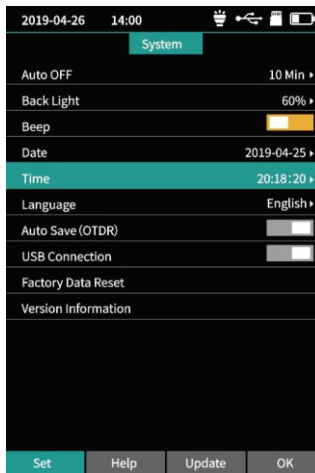
Light Source



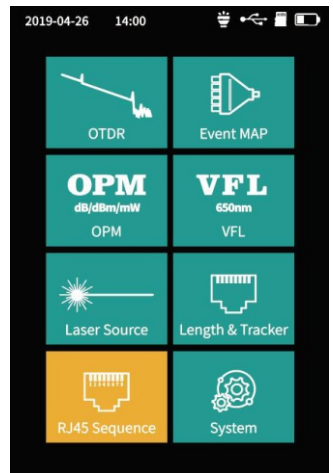
Sequence Test



Length & Tracking



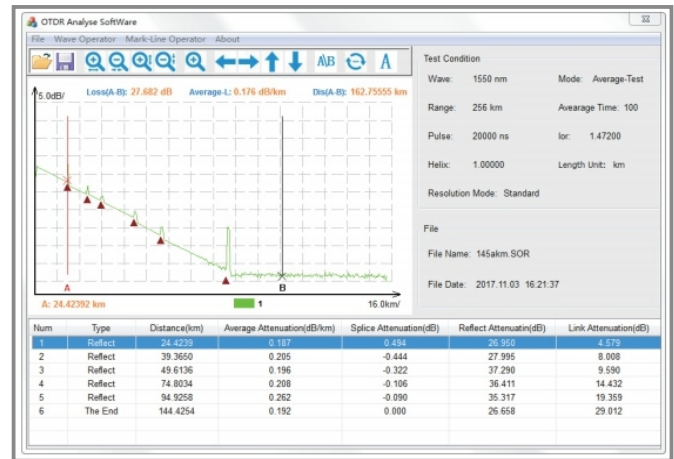
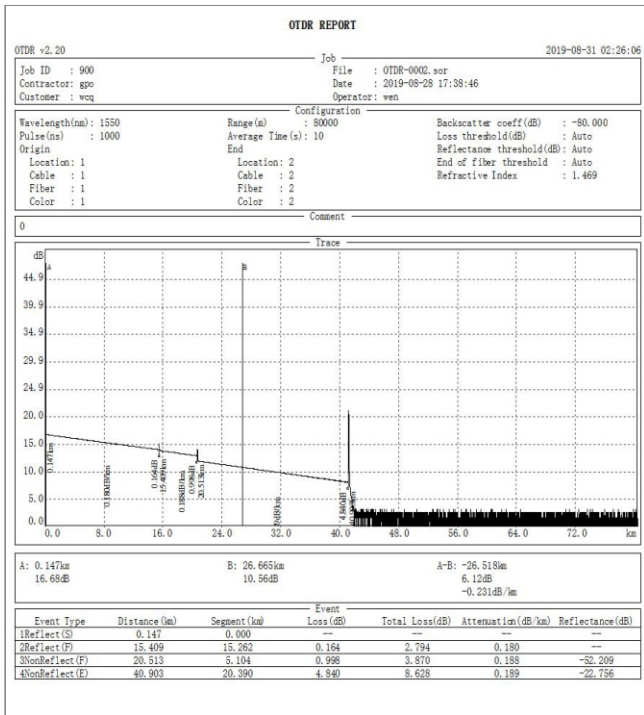
System Setting



Home

Please visit the link for more pictures and video demo  
<https://firstfiber.cn/products/ff-980rev-mini-pro-otdr-reflectometer-9-functions-in-1-device-opm-ols-vfl-event-map-rj45-ethernet-cable-sequence-distance-tracker>

## OTDR Report Printing

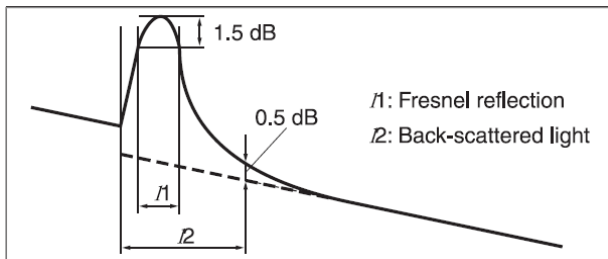
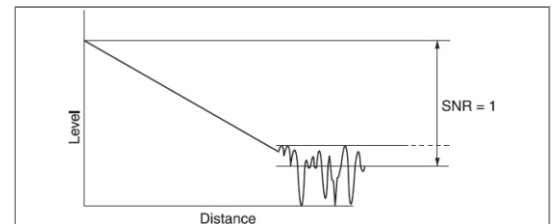


PC Software

## Key Parameters Explanation

### Notes

Dynamic range is measured with maximum pulse width, averaging time is 3 minutes, SNR=1; The level difference between the RMS noise level and the level where near end back-scattering occurs.



Instructions of OTDR Curves and Events that displayed on OTDR screen.



Event dead zone is measured with pulse width of 10ns; attenuation dead zone is also measured with pulse width of 50ns.

