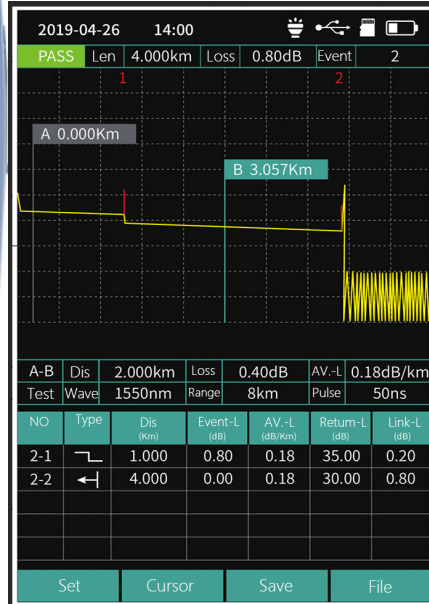


FF-980REV Mini Pro OTDR

High Precision, Portable for Easy Carrying,
and Ultra-short Event Dead Zone for any Cable Testing Situations

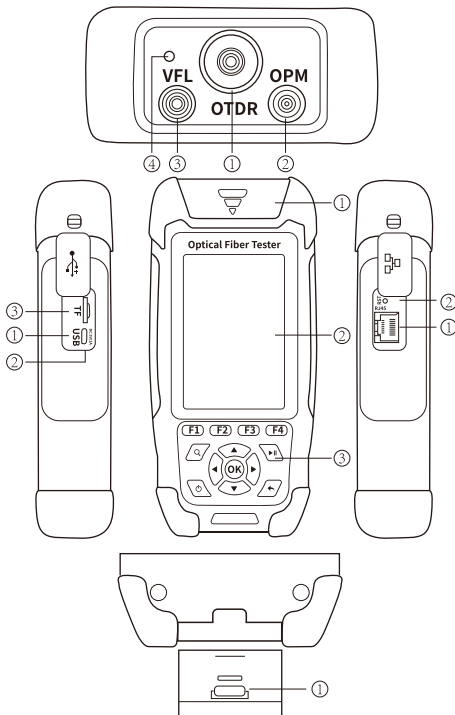


9-in-1



- OTDR (Auto Test)
- OTDR (Average Test)
- OTDR (Real Time Test)
- Event Map
- Optical Power Meter
- Optical Light Source
- Visual Fault Locator
- RJ45 Cable Tracking
- RJ45 Cable Sequence
- RJ45 Cable Length
- LED Light

Configuration



Top View

- ① OTDR/LS Port
- ② OPM Port
- ③ VFL Port
- ④ Flashlight

Front View

- ① Dust Cover
- ② 3.5 inch Screen
- ③ Function Keys

Left Side

- ① Micro USB Port
- ② Charging Indicator
- ③ TF Card Port

Right Side

- ① RJ45 Connector
- ② Reset Button

Bottom View

- ① RJ45 Remote Unit

Request a Remote Demo
sales@FirstFiber.cn

The Kit Includes: OTDR, FC/SC Connector, User Manual, USB Cable, OTDRviewer Software, Power Charging Adapter, Warranty Card, User Manual, Rj45 Signal Receiver, Carrying Case, Certificate of Calibrate

General	
Size/Weight	173x82x37mm/ 350g (Battery included)
Display	3.5 Inch Colorful Screen
Interface	USB, TF Card Port, Rj45 Port, OTDR port, VFL port, Power Meter Port, Charging Port
Power Supply	Input: 100V(ac) to 240V(ac), 50~60Hz, 0.6A; Output: 5V(DC), 2A 4000mAh/3.7V Lithium battery (with air traffic certification)
Working Time	>12 hours (Continuous measurement); Standby>20 hours
Power Saving	Intelligent power management Auto power off: Never/1min/5min/10min/30min/60min
Data Storage	Internal Flash Memory: >600 curves; TF Card: >230,000 curves (8G/32G/64G)
Language	Chinese/English/Russian/Portugal/Vietnamese/French/Spanish (Optional)
Protection	Rubber for Shockproof
Environmental Conditions	Operating temperature and humidity: -10℃~+50℃, ≤95% (non-condensation) Storage temperature and humidity: -40℃~+70℃, ≤95% (non-condensation) Altitude: 0~5000m above sea level Compatible and stable operation: in all climate conditions in Asia, Europe, America, Africa and Australia

OTDR Module	
Wavelength	1310/1550nm
Dynamic Range	24/22dB (Display Range 0 to 40dB)
Pulse Width	3ns,5ns,10ns,20ns,30ns,50ns,80ns,160ns,320ns,500ns,800ns,1μs,2μs,5μs,10μs
Distance Range	500m,1km, 2km, 4km, 8km, 16km, 32km, 64km
Dead Zone	Event dead zone: 3 meters, Attenuation dead zone: 8 meters
Sampling Resolution	Min 0.05m, Max 8m
Sampling Point	Min 16,000 Max 128,000 points
Linearity	≤0.2dB/dB
Averaging Time	Setting by user
Reflectance Accuracy	±3dB
Distance Accuracy	±(1m+measuring distance×3×10 ⁻⁵ +sampling resolution) (excluding IOR uncertainty)
Loss Threshold	0.01dB
Loss Resolution	0.001dB
Distance Resolution	0.01m
IOR Setting	1.0~2.0, 0.0001 step
Units	km, kft, mi
OTDR Trace Format	Telcordia GR-196-CORE Issue2 2010
Live Signal Warning	Support
Cursor	Supports 2 cursors to measure values between two points

OPM Module	
Wavelength	850/980/1300/1310/1490/1550/162/1650nm
Test Range	-70~+ 10dBm or -50~+ 26dBm
Accuracy	±0.35dB±1nW
Uncertainty	±5%
Modulation	CW/270/330/1k/2k Hz
Reference	Support

OLS Module

Laser Type	FP-LD
Wavelength	1310/1550nm
Output Power	> -5dBm
Output Mode	CW/270/330/1k/2k Hz
Stable	±0.5dB/15min (CW mode)

VFL Module

Wavelength	650nm
Output Power	10mw, CLASSIII B
Range	12km
Launching Mode	CW/1Hz/2Hz
Adapter Type	2.5mm Universal Adapter for FC SC ST Connectors

RJ45 Cable Tracker

Testing Range	300 meters
Signal Type	Analog signal/Digital Signal
Active Cable Track	Support
Signal Receiver	Sent as a default Accessories
Warning Sound	Yes
Rj45 Cable Type	Support both 568A and 568B

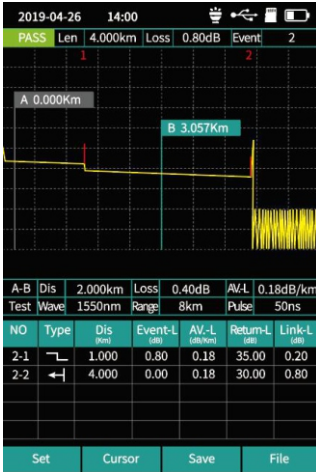
RJ45 Cable Sequence

Testing Range	300 meters
Signal Type	Analog signal/Digital Signal
Active Cable Test	Not Support
Remote Unit	Can be took out from bottom of the device
RJ45 Cable Type	Support both 568A and 568B
Testing Time	Less than 15s

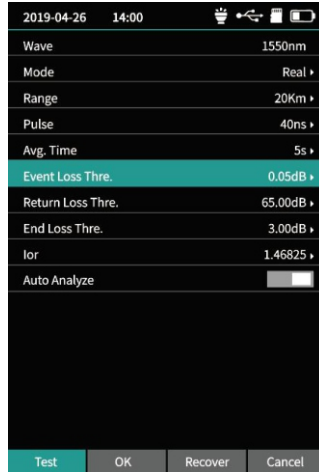
RJ45 Cable Length

Testing Range	300 meters
Signal Type	Analog signal/Digital Signal
Active Cable Test	Not Support
Testing Time	Less than 15s
Unit	m/km/ft

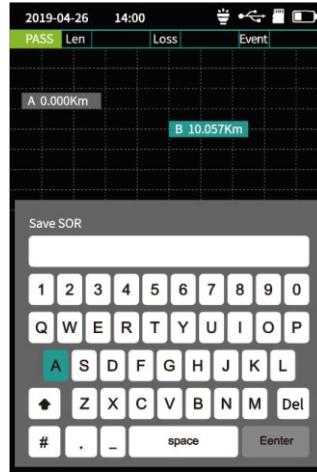
Functions & Settings



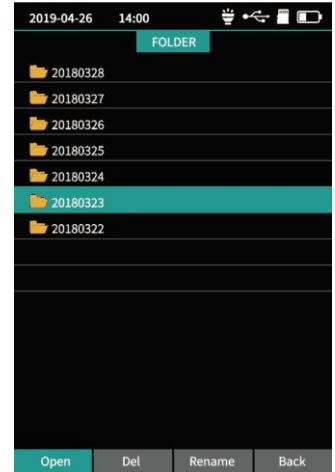
OTDR Curves



Testing Parameters



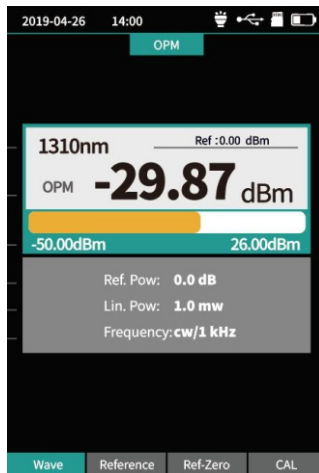
Sor Files Saving



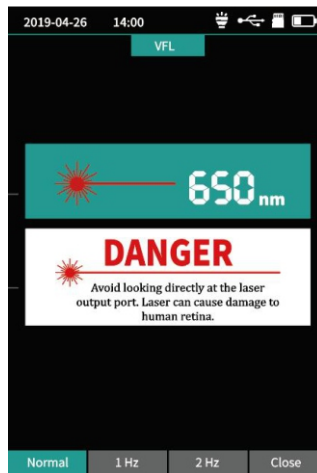
Testing Results



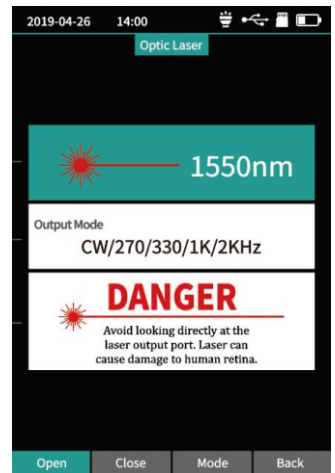
Event Map



Power Meter



Visual Fault Locator



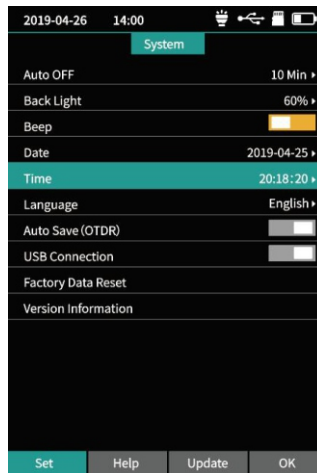
Light Source



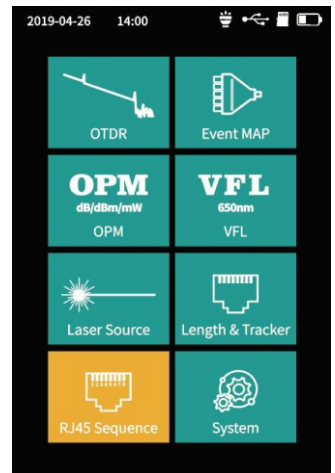
Sequence Test



Length & Tracking



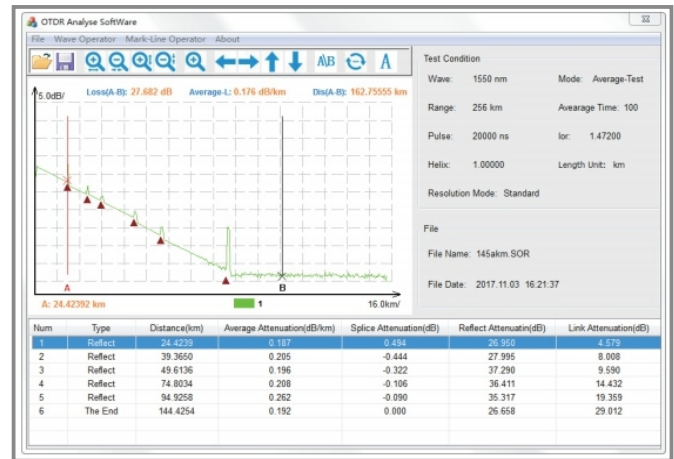
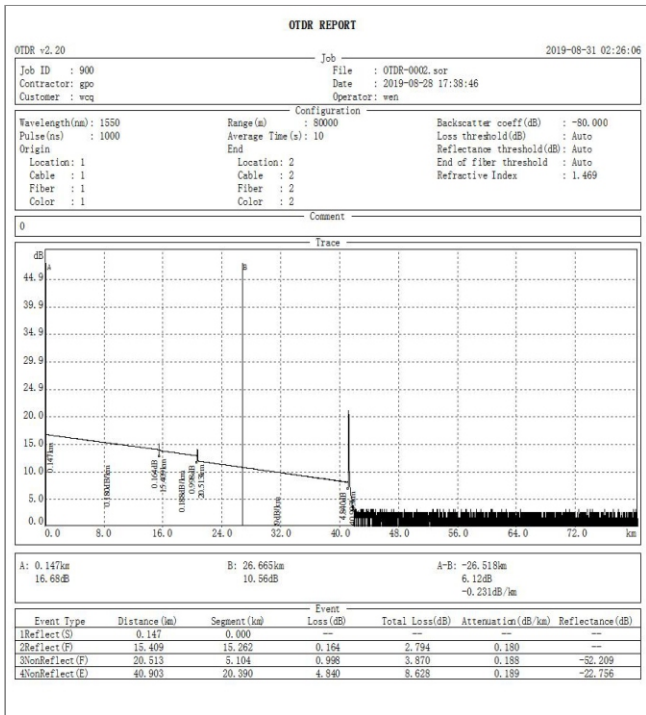
System Setting



Home

Please visit the link for more pictures and video demo
<https://firstfiber.cn/products/ff-980rev-mini-pro-otdr-reflectometer-9-functions-in-1-device-opm-ols-vfl-event-map-rj45-ethernet-cable-sequence-distance-tracker>

OTDR Report Printing

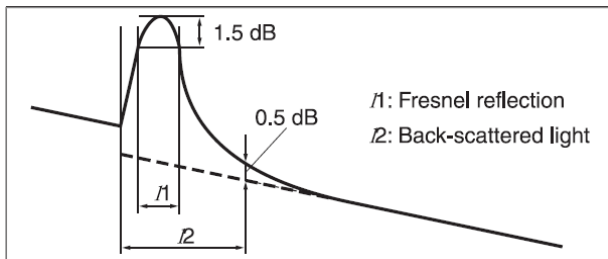
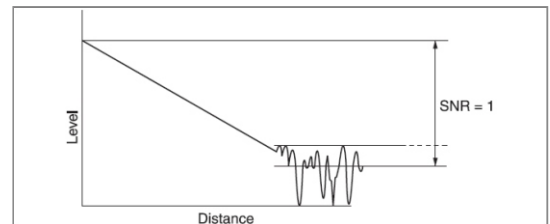


PC Software

Key Parameters Explanation

Notes

Dynamic range is measured with maximum pulse width, averaging time is 3 minutes, SNR=1; The level difference between the RMS noise level and the level where near end back-scattering occurs.



Instructions of OTDR Curves and Events that displayed on OTDR screen.



Event dead zone is measured with pulse width of 10ns; attenuation dead zone is also measured with pulse width of 50ns.

